

JETON

JETON

JETON R/D & MFG. INC.
宏珮工業股份有限公司
宏啓工業股份有限公司

No. 17, Lane 100, Tsao-tyi Rd.,
Ta-li Dist., Taichung, Taiwan.
台中市大里區草堤路100巷17號
Tel : +886-4-24953456
Fax: +886-4-24953399
E-mail: info@jeton.com.tw

QI JIN TRADING CO., LTD.
上海奇晉貿易有限公司

Tel : +86-21-65622765
+86-13564575416
E-mail: jetoninc@163.com



掃碼加微信



High Pressure Adjustable Nozzle Spraying Device

About Us

High Pressure Adjustable Nozzle Spraying Device



It is our great pleasure introducing JETON R/D & MFG. INC.

This is a company has more than 30 year's extensive experiences in the field of Injection Industrial and we major manufacture and market JETON ADJUSTABLE COOLANT HOSES, HIGH PRESSURE ADJUSTABLE NOZZLE and DOLL ARMATURE .

JETON is one of the leading manufacturers in INJECTION INDUSTRIAL from 1983 especially in ADJUSTABLE COOLANT HOSE for machine tools.

In 1989, we use the reason of COOLANT HOSE to develop the product for Doll in ARMATURE that could be put into the stuff toys or ceramic doll, soft body and so on. It's made the toy to be looked life-like very much.

In 1994, we extend the range of toy's accessory with great varieties. In 1996, we use the modern techniques to combine and develop with flexible structuring parts for applications.



Index

- 01** About Us
- 02** Index
- 03** High Pressure Adjustable Nozzle
- 05** Inclined-Injection Type
- 08** Direct-Injection Type
- 11** 360° Inclined-Injection Type
- 13** Mounted Type
- 15** Easy Jet-on Type
- 17** Inclined-Injection Type
- 18** Direct-Injection Type
- 19** Stainless Steel Adjustable Coolant Pipe System
- 22** Nozzle Angle Adjustment Tool
- 23** Spraying Device



High Pressure Adjustable Nozzle

High pressure adjustable nozzle can elevate the working efficiency, enhance accuracy of product, protect the service life of cutting tools, curtail working hours, and lower cost that makes it an efficient instrument to enhance the competitiveness.

- It's specially-designed mechanical structure can bring out an adjustable angle featuring 360° gyration after the oblique 34° angle, thus helping adjust a wide injection range.
- A choice of quality material along with accurate assembly to develop the greatest function of high pressure adjustable nozzle.
- The compression resistance to be at 30 kgf/cm²
- A wide range of adjustable angle, an easy adjustment.
- Steady and accurate positioning with no spring-back.
- Applied to the spraying, cooling system and ejector system of each type of machine.

Pressure Conversion Table

Kgf/cm ²	Bar	KPa	PSI	Torr mmHg	atm
1	= 0.981	98.1	14.2	735.56	0.968
30	= 29.43	2943	426	22066.8	29.04
100	= 98.1	9810	1420	73556	96.8



Adjustable Coolant Pipe System

The length can be increased or decreased as will. The compression resistance can be as high as 70 kgf/cm².



Inclined-Injection Type

The injection direction forms one angle with the fixed direction and is applied widely to deviated spraying cooling system, such as turret of the CNC lathe.



Direct-Injection Type

The injection direction is paralleled to the fixed direction and is widely applied to variety of CNC machining center, grinding machine, and each machining tool.



Mounted Type

The injection direction is paralleled to the fixed direction, but the fixed direction uses the close fit for a mount and is applied to each CNC system.



Easy Jet-On Type

The injection direction forms one angle with the fixed direction, but the fixed direction uses the close fit for a mount and is applied to each CNC system.



360° Inclined-Injection Type

The injection direction forms one angle with the fixed direction and is applied widely to deviated spraying cooling system, such as turret of the CNC lathe.



Ultra High Pressure Type

Accurate and steady positioning. The compression resistance to be at 100 kgf/cm².

Inclined-Injection High Pressure Adjustable Nozzle

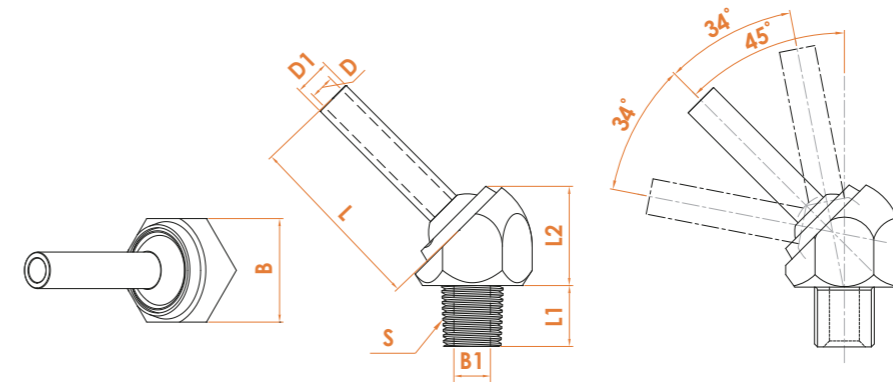
PATENTED DESIGN

The injection direction forms one angle with the fixed direction and is applied widely to deviated spraying cooling system, such as turret of the CNC lathe.



- Easy adjustable angle.
- Accurate and steady positioning.
- Element cleaning after the machining process.
- Get the "water" power ready to inject cutting tool, secure the cooling of the cutters in the machining course to extend the service life of cutters.
- Strong injection cooling system makes the filing strap won't wind around the lathe tool and secure the elements more accuracy and the surface more smooth during the machining process.
- Applied to spraying and cooling system and enector of each type of machine.

Item No.	Specifications	Major Size Unit (mm)							
		D	Thread(S)	L	L1	L2	D1	B1	Hexagram(B)
JTAP-1/8-10-4	1/8"PT-Φ4*10L	4	PT 1/8"	10	10	17.5	6	6	17
JTAP-1/8-10-2	1/8"PT-Φ2*10L	2	PT 1/8"	10	10	17.5	6	6	17
JTAP-1/8-10-1	1/8"PT-Φ1*10L	1	PT 1/8"	10	10	17.5	6	6	17
JTAP-1/8-30-4	1/8"PT-Φ4*30L	4	PT 1/8"	30	10	17.5	6	6	17
JTAP-1/8-30-2	1/8"PT-Φ2*30L	2	PT 1/8"	30	10	17.5	6	6	17
JTAP-1/8-30-1	1/8"PT-Φ1*30L	1	PT 1/8"	30	10	17.5	6	6	17
JTAP-1/8-50-4	1/8"PT-Φ4*50L	4	PT 1/8"	50	10	17.5	6	6	17
JTAP-1/8-50-2	1/8"PT-Φ2*50L	2	PT 1/8"	50	10	17.5	6	6	17
JTAP-1/8-50-1	1/8"PT-Φ1*50L	1	PT 1/8"	50	10	17.5	6	6	17
JTAP-1/4-10-4	1/4"PT-Φ4*10L	4	PT 1/4"	10	10	17.5	6	6	17
JTAP-1/4-10-2	1/4"PT-Φ2*10L	2	PT 1/4"	10	10	17.5	6	6	17
JTAP-1/4-10-1	1/4"PT-Φ1*10L	1	PT 1/4"	10	10	17.5	6	6	17
JTAP-1/4-30-4	1/4"PT-Φ4*30L	4	PT 1/4"	30	10	17.5	6	6	17
JTAP-1/4-30-2	1/4"PT-Φ2*30L	2	PT 1/4"	30	10	17.5	6	6	17
JTAP-1/4-30-1	1/4"PT-Φ1*30L	1	PT 1/4"	30	10	17.5	6	6	17
JTAP-1/4-50-4	1/4"PT-Φ4*50L	4	PT 1/4"	50	10	17.5	6	6	17
JTAP-1/4-50-2	1/4"PT-Φ2*50L	2	PT 1/4"	50	10	17.5	6	6	17
JTAP-1/4-50-1	1/4"PT-Φ1*50L	1	PT 1/4"	50	10	17.5	6	6	17
JTAP-3/8-20-6	3/8"PT-Φ6*20L	6	PT 3/8"	20	13	27.2	8	10	24
JTAP-3/8-40-6	3/8"PT-Φ6*40L	6	PT 3/8"	40	13	27.2	8	10	24
JTAP-3/8-60-6	3/8"PT-Φ6*60L	6	PT 3/8"	60	13	27.2	8	10	24
JTAP-1/2-30-8	1/2"PT-Φ8*30L	8	PT 1/2"	30	18	35.3	10	12	32
JTAP-1/2-50-8	1/2"PT-Φ8*50L	8	PT 1/2"	50	18	35.3	10	12	32
JTAP-1/2-70-8	1/2"PT-Φ8*70L	8	PT 1/2"	70	18	35.3	10	12	32

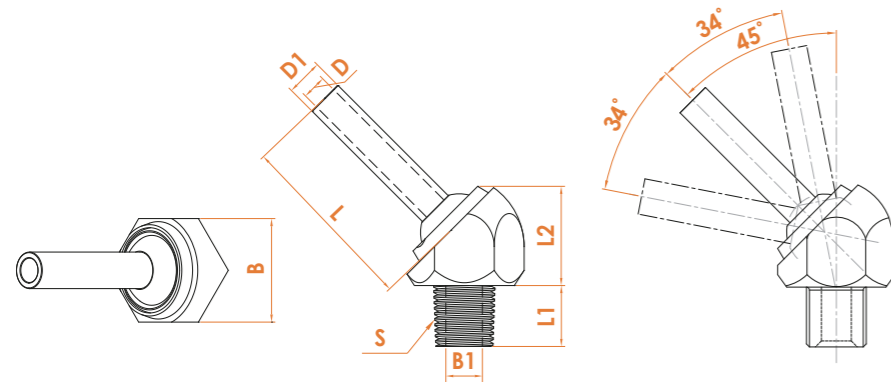


SPECIFICATIONS
For Inclined-injection High Pressure Adjustable Nozzle

• Pressure Resistance: 30kgf/cm²



Item No.	Specifications	Major Size Unit (mm)							
		D	Thread(S)	L	L1	L2	D1	B1	Hexagram(B)
JTAN-1/8-10-4	1/8"NPT-Φ4*10L	4	NPT 1/8"	10	10	17.5	6	6	17
JTAN-1/8-10-2	1/8"NPT-Φ2*10L	2	NPT 1/8"	10	10	17.5	6	6	17
JTAN-1/8-10-1	1/8"NPT-Φ1*10L	1	NPT 1/8"	10	10	17.5	6	6	17
JTAN-1/8-30-4	1/8"NPT-Φ4*30L	4	NPT 1/8"	30	10	17.5	6	6	17
JTAN-1/8-30-2	1/8"NPT-Φ2*30L	2	NPT 1/8"	30	10	17.5	6	6	17
JTAN-1/8-30-1	1/8"NPT-Φ1*30L	1	NPT 1/8"	30	10	17.5	6	6	17
JTAN-1/8-50-4	1/8"NPT-Φ4*50L	4	NPT 1/8"	50	10	17.5	6	6	17
JTAN-1/8-50-2	1/8"NPT-Φ2*50L	2	NPT 1/8"	50	10	17.5	6	6	17
JTAN-1/8-50-1	1/8"NPT-Φ1*50L	1	NPT 1/8"	50	10	17.5	6	6	17
JTAN-1/4-10-4	1/4"NPT-Φ4*10L	4	NPT 1/4"	10	10	17.5	6	6	17
JTAN-1/4-10-2	1/4"NPT-Φ2*10L	2	NPT 1/4"	10	10	17.5	6	6	17
JTAN-1/4-10-1	1/4"NPT-Φ1*10L	1	NPT 1/4"	10	10	17.5	6	6	17
JTAN-1/4-30-4	1/4"NPT-Φ4*30L	4	NPT 1/4"	30	10	17.5	6	6	17
JTAN-1/4-30-2	1/4"NPT-Φ2*30L	2	NPT 1/4"	30	10	17.5	6	6	17
JTAN-1/4-30-1	1/4"NPT-Φ1*30L	1	NPT 1/4"	30	10	17.5	6	6	17
JTAN-1/4-50-4	1/4"NPT-Φ4*50L	4	NPT 1/4"	50	10	17.5	6	6	17
JTAN-1/4-50-2	1/4"NPT-Φ2*50L	2	NPT 1/4"	50	10	17.5	6	6	17
JTAN-1/4-50-1	1/4"NPT-Φ1*50L	1	NPT 1/4"	50	10	17.5	6	6	17
JTAN-3/8-20-6	3/8"NPT-Φ6*20L	6	NPT 3/8"	20	13	27.2	8	10	24
JTAN-3/8-40-6	3/8"NPT-Φ6*40L	6	NPT 3/8"	40	13	27.2	8	10	24
JTAN-3/8-60-6	3/8"NPT-Φ6*60L	6	NPT 3/8"	60	13	27.2	8	10	24
JTAN-1/2-30-8	1/2"NPT-Φ8*30L	8	NPT 1/2"	30	18	35.3	10	12	32
JTAN-1/2-50-8	1/2"NPT-Φ8*50L	8	NPT 1/2"	50	18	35.3	10	12	32
JTAN-1/2-70-8	1/2"NPT-Φ8*70L	8	NPT 1/2"	70	18	35.3	10	12	32



SPECIFICATIONS

For Inclined-injection High Pressure Adjustable Nozzle

• Pressure Resistance: 30kgf/cm²

Item No.	Specifications	Major Size Unit (mm)							
		D	Thread(S)	L	L1	L2	D1	B1	Hexagram(B)
JTAM-10-10-4	M10*1.25P-Φ4*10L	4	M10*1.25P	10	10	17.5	6	6	17
JTAM-10-10-2	M10*1.25P-Φ2*10L	2	M10*1.25P	10	10	17.5	6	6	17
JTAM-10-10-1	M10*1.25P-Φ1*10L	1	M10*1.25P	10	10	17.5	6	6	17
JTAM-10-30-4	M10*1.25P-Φ4*30L	4	M10*1.25P	30	10	17.5	6	6	17
JTAM-10-30-2	M10*1.25P-Φ2*30L	2	M10*1.25P	30	10	17.5	6	6	17
JTAM-10-30-1	M10*1.25P-Φ1*30L	1	M10*1.25P	30	10	17.5	6	6	17
JTAM-10-50-4	M10*1.25P-Φ4*50L	4	M10*1.25P	50	10	17.5	6	6	17
JTAM-10-50-2	M10*1.25P-Φ2*50L	2	M10*1.25P	50	10	17.5	6	6	17
JTAM-10-50-1	M10*1.25P-Φ1*50L	1	M10*1.25P	50	10	17.5	6	6	17
JTAP2-1/8-10-3	1/8"PT-Φ3*10L	3	PT 1/8"	10	10	14.8	5	5	14
JTAP2-1/8-20-3	1/8"PT-Φ3*20L	3	PT 1/8"	20	10	14.8	5	5	14
JTAP2-3/8-10-4	3/8"PT-Φ4*10L	4	PT 3/8"	10	10	17.5	6	6	17
JTAP2-3/8-10-2	3/8"PT-Φ2*10L	2	PT 3/8"	10	10	17.5	6	6	17
JTAP2-3/8-10-1	3/8"PT-Φ1*10L	1	PT 3/8"	10	10	17.5	6	6	17
JTAP2-3/8-30-4	3/8"PT-Φ4*30L	4	PT 3/8"	30	10	17.5	6	6	17
JTAP2-3/8-30-2	3/8"PT-Φ2*30L	2	PT 3/8"	30	10	17.5	6	6	17
JTAP2-3/8-30-1	3/8"PT-Φ1*30L	1	PT 3/8"	30	10	17.5	6	6	17
JTAP2-3/8-50-4	3/8"PT-Φ4*50L	4	PT 3/8"	50	10	17.5	6	6	17
JTAP2-3/8-50-2	3/8"PT-Φ2*50L	2	PT 3/8"	50	10	17.5	6	6	17
JTAP2-3/8-50-1	3/8"PT-Φ1*50L	1	PT 3/8"	50	10	17.5	6	6	17
JTAN2-1/8-10-3	1/8"NPT-Φ3*10L	3	NPT 1/8"	10	10	14.8	5	5	14
JTAN2-1/8-20-3	1/8"NPT-Φ3*20L	3	NPT 1/8"	20	10	14.8	5	5	14
JTAN2-3/8-10-4	3/8"NPT-Φ4*10L	4	NPT 3/8"	10	10	17.5	6	6	17
JTAN2-3/8-10-2	3/8"NPT-Φ2*10L	2	NPT 3/8"	10	10	17.5	6	6	17
JTAN2-3/8-10-1	3/8"NPT-Φ1*10L	1	NPT 3/8"	10	10	17.5	6	6	17
JTAN2-3/8-30-4	3/8"NPT-Φ4*30L	4	NPT 3/8"	30	10	17.5	6	6	17
JTAN2-3/8-30-2	3/8"NPT-Φ2*30L	2	NPT 3/8"	30	10	17.5	6	6	17
JTAN2-3/8-30-1	3/8"NPT-Φ1*30L	1	NPT 3/8"	30	10	17.5	6	6	17
JTAN2-3/8-50-4	3/8"NPT-Φ4*50L	4	NPT 3/8"	50	10	17.5	6	6	17
JTAN2-3/8-50-2	3/8"NPT-Φ2*50L	2	NPT 3/8"	50	10	17.5	6	6	17
JTAN2-3/8-50-1	3/8"NPT-Φ1*50L	1	NPT 3/8"	50	10	17.5	6	6	17
JTAM2-8-10-3	M8*1.25P-Ø3*10L	3	M8*1.25P	10	10	14.8	5	4.5	14
JTAM2-8-20-3	M8*1.25P-Ø3*20L	3	M8*1.25P	20	10	14.8	5	4.5	14
JTAM2-6-10-3	M6*1.0P-Ø3*10L	3	M6*1.0P	10	10	14.8	8	4.5	14
JTAM2-6-20-3	M6*1.0P-Ø3*20L	3	M6*1.0P	20	10	14.8	8	4.5	14

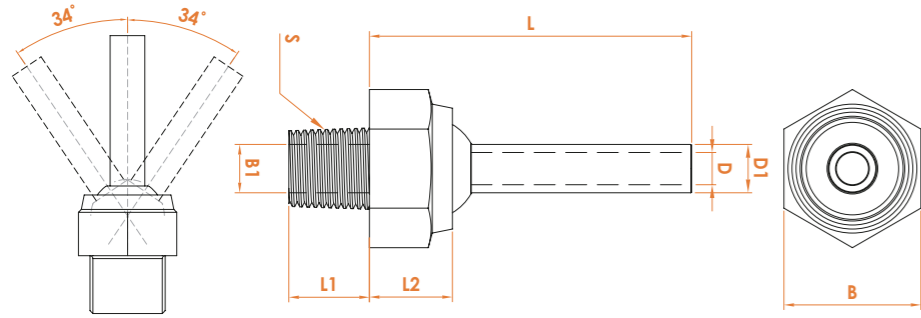
Direct-Injection High Pressure Adjustable Nozzle

The injection direction is paralleled to the fixed direction, with the screw to be used to make the fixed method. It is widely applied to the spraying and cooling system and ejector of each type of machine.



- Easy adjustable angle.
- Accurate and steady positioning, with no spring-back.
- Get the "water" power ready for an accurate injection towards milling cutter or drill, thus securing the sufficient cooling for cutter or drill during the machining process and extending its service life.
- Applied widely to the spraying and cooling system and ejector of each type of machine.





SPECIFICATIONS
For Direct-Injection High Pressure Adjustable Nozzle

• Pressure Resistance: 30kgf/cm²

Item No.	Specifications	Major Size Unit (mm)							
		D	Thread(S)	L	L1	L2	D1	B1	Hexagram(B)
JTSP-1/8-20-4	1/8"PT-Φ4*20L	4	PT 1/8"	20	10	10.5	6	6	17
JTSP-1/8-20-2	1/8"PT-Φ2*20L	2	PT 1/8"	20	10	10.5	6	6	17
JTSP-1/8-20-1	1/8"PT-Φ1*20L	1	PT 1/8"	20	10	10.5	6	6	17
JTSP-1/8-40-4	1/8"PT-Φ4*40L	4	PT 1/8"	40	10	10.5	6	6	17
JTSP-1/8-40-2	1/8"PT-Φ2*40L	2	PT 1/8"	40	10	10.5	6	6	17
JTSP-1/8-40-1	1/8"PT-Φ1*40L	1	PT 1/8"	40	10	10.5	6	6	17
JTSP-1/8-60-4	1/8"PT-Φ4*60L	4	PT 1/8"	60	10	10.5	6	6	17
JTSP-1/8-60-2	1/8"PT-Φ2*60L	2	PT 1/8"	60	10	10.5	6	6	17
JTSP-1/8-60-1	1/8"PT-Φ1*60L	1	PT 1/8"	60	10	10.5	6	6	17
JTSP-1/4-20-4	1/4"PT-Φ4*20L	4	PT 1/4"	20	10	10.5	6	6	17
JTSP-1/4-20-2	1/4"PT-Φ2*20L	2	PT 1/4"	20	10	10.5	6	6	17
JTSP-1/4-20-1	1/4"PT-Φ1*20L	1	PT 1/4"	20	10	10.5	6	6	17
JTSP-1/4-40-4	1/4"PT-Φ4*40L	4	PT 1/4"	40	10	10.5	6	6	17
JTSP-1/4-40-2	1/4"PT-Φ2*40L	2	PT 1/4"	40	10	10.5	6	6	17
JTSP-1/4-40-1	1/4"PT-Φ1*40L	1	PT 1/4"	40	10	10.5	6	6	17
JTSP-1/4-60-4	1/4"PT-Φ4*60L	4	PT 1/4"	60	10	10.5	6	6	17
JTSP-1/4-60-2	1/4"PT-Φ2*60L	2	PT 1/4"	60	10	10.5	6	6	17
JTSP-1/4-60-1	1/4"PT-Φ1*60L	1	PT 1/4"	60	10	10.5	6	6	17
JTSP-3/8-30-6	3/8"PT-Φ6*30L	6	PT 3/8"	30	13	15	8	10	24
JTSP-3/8-50-6	3/8"PT-Φ6*50L	6	PT 3/8"	50	13	15	8	10	24
JTSP-3/8-70-6	3/8"PT-Φ6*70L	6	PT 3/8"	70	13	15	8	10	24
JTSP-1/2-40-8	1/2"PT-Φ8*40L	8	PT 1/2"	40	18	21	10	12	32
JTSP-1/2-60-8	1/2"PT-Φ8*60L	8	PT 1/2"	60	18	21	10	12	32
JTSP-1/2-80-8	1/2"PT-Φ8*80L	8	PT 1/2"	80	18	21	10	12	32
JTSN-1/8-20-4	1/8"NPT-Φ4*20L	4	NPT 1/8"	20	10	10.5	6	6	17
JTSN-1/8-20-2	1/8"NPT-Φ2*20L	2	NPT 1/8"	20	10	10.5	6	6	17
JTSN-1/8-20-1	1/8"NPT-Φ1*20L	1	NPT 1/8"	20	10	10.5	6	6	17
JTSN-1/8-40-4	1/8"NPT-Φ4*40L	4	NPT 1/8"	40	10	10.5	6	6	17
JTSN-1/8-40-2	1/8"NPT-Φ2*40L	2	NPT 1/8"	40	10	10.5	6	6	17
JTSN-1/8-40-1	1/8"NPT-Φ1*40L	1	NPT 1/8"	40	10	10.5	6	6	17
JTSN-1/8-60-4	1/8"NPT-Φ4*60L	4	NPT 1/8"	60	10	10.5	6	6	17
JTSN-1/8-60-2	1/8"NPT-Φ2*60L	2	NPT 1/8"	60	10	10.5	6	6	17
JTSN-1/8-60-1	1/8"NPT-Φ1*60L	1	NPT 1/8"	60	10	10.5	6	6	17
JTSM-10-15-4	M10*1.25P*Φ4*15L	4	M10*1.25P	15	10	10.5	6	6	17
JTSM-10-15-2	M10*1.25P*Φ2*15L	2	M10*1.25P	15	10	10.5	6	6	17
JTSM-10-15-1	M10*1.25P*Φ1*15L	1	M10*1.25P	15	10	10.5	6	6	17
JTSM-10-20-4	M10*1.25P*Φ4*20L	4	M10*1.25P	20	10	10.5	6	6	17
JTSM-10-20-2	M10*1.25P*Φ2*20L	2	M10*1.25P	20	10	10.5	6	6	17
JTSM-10-20-1	M10*1.25P*Φ1*20L	1	M10*1.25P	20	10	10.5	6	6	17
JTSM-10-40-4	M10*1.25P*Φ4*40L	4	M10*1.25P	40	10	10.5	6	6	17
JTSM-10-40-2	M10*1.25P*Φ2*40L	2	M10*1.25P	40	10	10.5	6	6	17
JTSM-10-40-1	M10*1.25P*Φ1*40L	1	M10*1.25P	40	10	10.5	6	6	17
JTSM-10-60-4	M10*1.25P*Φ4*60L	4	M10*1.25P	60	10	10.5	6	6	17
JTSM-10-60-2	M10*1.25P*Φ2*60L	2	M10*1.25P	60	10	10.5	6	6	17
JTSM-10-60-1	M10*1.25P*Φ1*60L	1	M10*1.25P	60	10	10.5	6	6	17
JTSM-20-30-6	M20*1.5P*Φ6*30L	6	M20*1.5P	30	13	15	8	10	24
JTSM-20-50-6	M20*1.5P*Φ6*50L	6	M20*1.5P	50	13	15	8	10	24
JTSM-20-70-6	M20*1.5P*Φ6*70L	6	M20*1.5P	70	13	15	8	10	24
JTSM-24-40-8	M24*2.0P*Φ8*40L	8	M24*2.0P	40	18	21	10	12	32
JTSM-24-60-8	M24*2.0P*Φ8*60L	8	M24*2.0P	60	18	21	10	12	32
JTSM-24-80-8	M24*2.0P*Φ8*80L	8	M24*2.0P	80	18	21	10	12	32

Item No.	Specifications	Major Size Unit (mm)							
		D	Thread(S)	L	L1	L2	D1	B1	Hexagram(B)
JTSN-1/4-20-4	1/4"NPT-Φ4*20L	4	NPT 1/4"	20	10	10.5	6	6	17
JTSN-1/4-20-2	1/4"NPT-Φ2*20L	2	NPT 1/4"	20	10	10.5	6	6	17
JTSN-1/4-20-1	1/4"NPT-Φ1*20L	1	NPT 1/4"	20	10	10.5	6	6	17
JTSN-1/4-40-4	1/4"NPT-Φ4*40L	4	NPT 1/4"	40	10	10.5	6	6	17
JTSN-1/4-40-2	1/4"NPT-Φ2*40L	2	NPT 1/4"	40	10	10.5	6	6	17
JTSN-1/4-40-1	1/4"NPT-Φ1*40L	1	NPT 1/4"	40	10	10.5	6	6	17
JTSN-1/4-60-4	1/4"NPT-Φ4*60L	4	NPT 1/4"	60	10	10.5	6	6	17
JTSN-1/4-60-2	1/4"NPT-Φ2*60L	2	NPT 1/4"	60	10	10.5	6	6	17
JTSN-1/4-60-1	1/4"NPT-Φ1*60L	1	NPT 1/4"	60	10	10.5	6	6	17
JTSN-3/8-30-6	3/8"NPT-Φ6*30L	6	NPT 3/8"	30	13	15	8	10	24
JTSN-3/8-50-6	3/8"NPT-Φ6*50L	6	NPT 3/8"	50	13	15	8	10	24
JTSN-3/8-70-6	3/8"NPT-Φ6*70L	6	NPT 3/8"	70	13	15	8	10	24
JTSN-1/2-40-8	1/2"NPT-Φ8*40L	8	NPT 1/2"	40	18	21	10	12	32
JTSN-1/2-60-8	1/2"NPT-Φ8*60L	8	NPT 1/2"	60	18	21	10	12	32
JTSN-1/2-80-8	1/2"NPT-Φ8*80L	8	NPT 1/2"	80	18	21	10	12	32
JTSM-10-15-4	M10*1.25P*Φ4*15L	4	M10*1.25P	15	10	10.5	6	6	17
JTSM-10-15-2	M10*1.25P*Φ2*15L	2	M10*1.25P	15	10	10.5	6	6	17
JTSM-10-15-1	M10*1.25P*Φ1*15L	1	M10*1.25P	15	10	10.5	6	6	17
JTSM-10-20-4	M10*1.25P*Φ4*20L	4	M10*1.25P	20	10	10.5	6	6	17
JTSM-10-20-2	M10*1.25P*Φ2*20L	2	M10*1.25P	20	10	10.5	6	6	17
JTSM-10-20-1	M10*1.25P*Φ1*20L	1	M10*1.25P	20	10	10.5	6	6	17
JTSM-10-40-4	M10*1.25P*Φ4*40L	4	M10*1.25P	40	10	10.5	6	6	17
JTSM-10-40-2	M10*1.25P*Φ2*40L	2	M10*1.25P	40	10	10.5	6	6	17
JTSM-10-40-1	M10*1.25P*Φ1*40L	1	M10*1.25P	40	10	10.5	6	6	17
JTSM-10-60-4	M10*1.25P*Φ4*60L	4	M10*1.25P	60	10	10.5	6	6	17
JTSM-10-60-2	M10*1.25P*Φ2*60L	2	M10*1.25P	60	10	10.5	6	6	17
JTSM-10-60-1	M10*1.25P*Φ1*60L	1	M10*1.25P	60	10	10.5	6	6	17
JTSM-20-30-6	M20*1.5P*Φ6*30L	6	M20*1.5P	30	13	15	8	10	24
JTSM-20-50-6	M20*1.5P*Φ6*50L	6	M20*1.5P	50	13	15	8	10	24
JTSM-20-70-6	M20*1.5P*Φ6*70L	6	M20*1.5P	70	13	15	8	10	24
JTSM-24-40-8	M24*2.0P*Φ8*40L	8	M24*2.0P	40	18	21	10	12	32
JTSM-24-60-8	M24*2.0P*Φ8*60L	8	M24*2.0P	60	18	21	10	12	32
JTSM-24-80-8	M24*2.0P*Φ8*80L	8	M24*2.0P	80	18	21	10	12	32

360° Inclined-Injection High Pressure Adjustable Nozzle

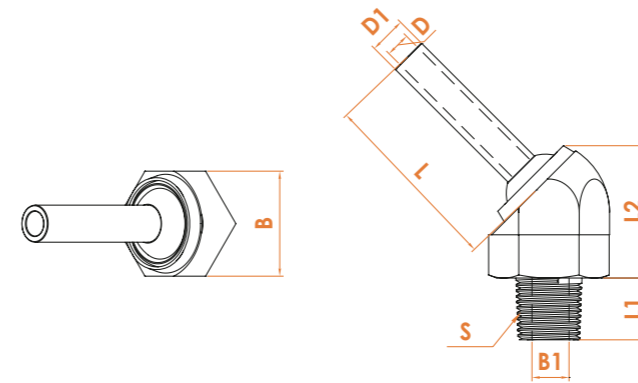
PATENTED DESIGN



- Easy adjustable angle.
- Accurate and steady positioning.
- Element cleaning after the machining process.
- Get the "water" power ready to inject cutting tool, secure the cooling of the cutters in the machining course to extend the service life of cutters.
- Strong injection cooling system makes the filing strap won't wind around the lathe tool and secure the elements more accuracy and the surface more smooth during the machining process.
- Applied to spraying and cooling system and enector of each type of machine. Freely rotate in 360°

The injection direction forms one angle with the fixed direction and is applied widely to deviatedspraying cooling system, such as turret of the CNC lathe.

Item No.	Specifications	Major Size Unit (mm)							
		D	Thread(S)	L	L1	L2	D1	B1	Hexagram(B)
JTASP-1/8-10-4	1/8"PT-Φ4*10L	4	PT 1/8"	10	10	21.4	6	7	17
JTASP-1/8-10-2	1/8"PT-Φ2*10L	2	PT 1/8"	10	10	21.4	6	7	17
JTASP-1/8-10-1	1/8"PT-Φ1*10L	1	PT 1/8"	10	10	21.4	6	7	17
JTASP-1/8-30-4	1/8"PT-Φ4*30L	4	PT 1/8"	30	10	21.4	6	7	17
JTASP-1/8-30-2	1/8"PT-Φ2*30L	2	PT 1/8"	30	10	21.4	6	7	17
JTASP-1/8-30-1	1/8"PT-Φ1*30L	1	PT 1/8"	30	10	21.4	6	7	17
JTASP-1/8-50-4	1/8"PT-Φ4*50L	4	PT 1/8"	50	10	21.4	6	7	17
JTASP-1/8-50-2	1/8"PT-Φ2*50L	2	PT 1/8"	50	10	21.4	6	7	17
JTASP-1/8-50-1	1/8"PT-Φ1*50L	1	PT 1/8"	50	10	21.4	6	7	17
JTASP-1/4-10-4	1/4"PT-Φ4*10L	4	PT 1/4"	10	10	21.4	6	7	17
JTASP-1/4-10-2	1/4"PT-Φ2*10L	2	PT 1/4"	10	10	21.4	6	7	17
JTASP-1/4-10-1	1/4"PT-Φ1*10L	1	PT 1/4"	10	10	21.4	6	7	17
JTASP-1/4-30-4	1/4"PT-Φ4*30L	4	PT 1/4"	30	10	21.4	6	7	17
JTASP-1/4-30-2	1/4"PT-Φ2*30L	2	PT 1/4"	30	10	21.4	6	7	17
JTASP-1/4-30-1	1/4"PT-Φ1*30L	1	PT 1/4"	30	10	21.4	6	7	17
JTASP-1/4-50-4	1/4"PT-Φ4*50L	4	PT 1/4"	50	10	21.4	6	7	17
JTASP-1/4-50-2	1/4"PT-Φ2*50L	2	PT 1/4"	50	10	21.4	6	7	17
JTASP-1/4-50-1	1/4"PT-Φ1*50L	1	PT 1/4"	50	10	21.4	6	7	17
JTASP-3/8-10-4	3/8"PT-Φ4*10L	4	PT 3/8"	10	10	21.4	6	7	17
JTASP-3/8-10-2	3/8"PT-Φ2*10L	2	PT 3/8"	10	10	21.4	6	7	17
JTASP-3/8-10-1	3/8"PT-Φ1*10L	1	PT 3/8"	10	10	21.4	6	7	17



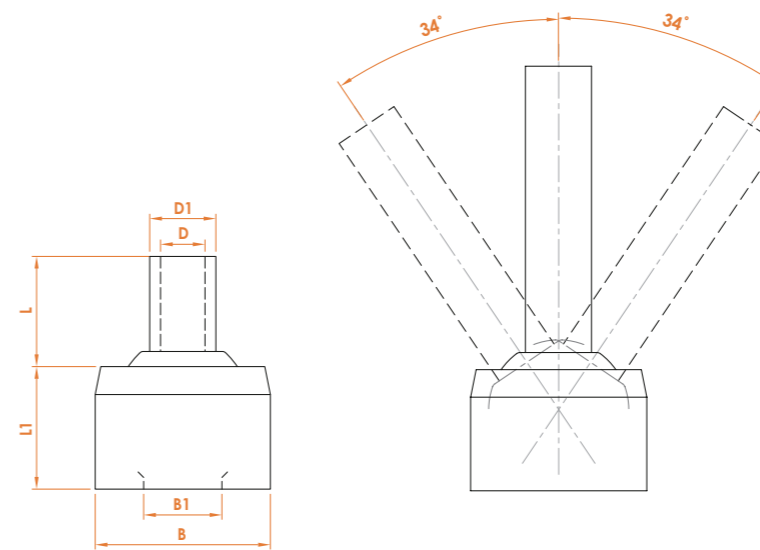
SPECIFICATIONS
360° Inclined-Injection High Pressure Adjustable Nozzle

• Pressure Resistance: 30 kgf/cm²

Item No.	Specifications	Major Size Unit (mm)							
		D	Thread(S)	L	L1	L2	D1	B1	Hexagram(B)
JTASP-3/8-30-4	3/8"PT-Φ4*30L	4	PT 3/8"	30	10	21.4	6	7	17
JTASP-3/8-30-2	3/8"PT-Φ2*30L	2	PT 3/8"	30	10	21.4	6	7	17
JTASP-3/8-30-1	3/8"PT-Φ1*30L	1	PT 3/8"	30	10	21.4	6	7	17
JTASP-3/8-50-4	3/8"PT-Φ4*50L	4	PT 3/8"	50	10	21.4	6	7	17
JTASP-3/8-50-2	3/8"PT-Φ2*50L	2	PT 3/8"	50	10	21.4	6	7	17
JTASP-3/8-50-1	3/8"PT-Φ1*50L	1	PT 3/8"	50	10	21.4	6	7	17
JTASN-1/8-10-4	1/8"NPT-Φ4*10L	4	NPT 1/8"	10	10	21.4	6	7	17
JTASN-1/8-10-2	1/8"NPT-Φ2*10L	2	NPT 1/8"	10	10	21.4	6	7	17
JTASN-1/8-10-1	1/8"NPT-Φ1*10L	1	NPT 1/8"	10	10	21.4	6	7	17
JTASN-1/8-30-4	1/8"NPT-Φ4*30L	4	NPT 1/8"	30	10	21.4	6	7	17
JTASN-1/8-30-2	1/8"NPT-Φ2*30L	2	NPT 1/8"	30	10	21.4	6	7	17
JTASN-1/8-30-1	1/8"NPT-Φ1*30L	1	NPT 1/8"	30	10	21.4	6	7	17
JTASN-1/8-50-4	1/8"NPT-Φ4*50L	4	NPT 1/8"	50	10	21.4	6	7	17
JTASN-1/8-50-2	1/8"NPT-Φ2*50L	2	NPT 1/8"	50	10	21.4	6	7	17
JTASN-1/8-50-1	1/8"NPT-Φ1*50L	1	NPT 1/8"	50	10	21.4	6	7	17
JTASN-1/4-10-4	1/4"NPT-Φ4*10L	4	NPT 1/4"	10	10	21.4	6	7	17
JTASN-1/4-10-2	1/4"NPT-Φ2*10L	2	NPT 1/4"	10	10	21.4	6	7	17
JTASN-1/4-10-1	1/4"NPT-Φ1*10L	1	NPT 1/4"	10	10	21.4	6	7	17
JTASN-1/4-30-4	1/4"NPT-Φ4*30L	4	NPT 1/4"	30	10	21.4	6	7	17
JTASN-1/4-30-2	1/4"NPT-Φ2*30L	2	NPT 1/4"	30	10	21.4	6	7	17
JTASN-1/4-30-1	1/4"NPT-Φ1*30L	1	NPT 1/4"	30	10	21.4	6	7	17
JTASN-1/4-50-4	1/4"NPT-Φ4*50L	4	NPT 1/4"	50	10	21.4	6	7	17
JTASN-1/4-50-2	1/4"NPT-Φ2*50L	2	NPT 1/4"	50	10	21.4	6	7	17
JTASN-1/4-50-1	1/4"NPT-Φ1*50L	1	NPT 1/4"	50	10	21.4	6	7	17
JTASN-3/8-10-4	3/8"NPT-Φ4*10L	4	NPT 3/8"	10	10	21.4	6	7	17
JTASN-3/8-10-2	3/8"NPT-Φ2*10L	2	NPT 3/8"	10	10	21.4	6	7	17
JTASN-3/8-10-1	3/8"NPT-Φ1*10L	1	NPT 3/8"	10	10	21.4	6	7	17
JTASN-3/8-30-4	3/8"NPT-Φ4*30L	4	NPT 3/8"	30	10	21.4	6	7	17
JTASN-3/8-30-2	3/8"NPT-Φ2*30L	2	NPT 3/8"	30	10	21.4	6	7	17
JTASN-3/8-30-1	3/8"NPT-Φ1*30L	1	NPT 3/8"	30	10	21.4	6	7	17
JTASN-3/8-50-4	3/8"NPT-Φ4*50L	4	NPT 3/8"	50	10	21.4	6	7	17
JTASN-3/8-50-2	3/8"NPT-Φ2*50L	2	NPT 3/8"	50	10	21.4	6	7	17
JTASN-3/8-50-1	3/8"NPT-Φ1*50L	1	NPT 3/8"	50	10	21.4	6	7	17
JTASM-10-10-4	M10*1.25P-Φ4*10L	4	M10*1.25P	10	10	21.4	6	7	17
JTASM-10-10-2	M10*1.25P-Φ2*10L	2	M10*1.25P	10	10	21.4	6	7	17
JTASM-10-10-1	M10*1.25P-Φ1*10L	1	M10*1.25P	10	10	21.4	6	7	17
JTASM-10-30-4	M10*1.25P-Φ4*30L	4	M10*1.25P	30	30	21.4	6	7	17
JTASM-10-30-2	M10*1.25P-Φ2*30L	2	M10*1.25P	30	30	21.4	6	7	17
JTASM-10-30-1	M10*1.25P-Φ1*30L	1	M10*1.25P	30	30	21.4	6	7	17
JTASM-10-50-4	M10*1.25P-Φ4*50L	4	M10*1.25P	50	50	21.4	6	7	17
JTASM-10-50-2	M10*1.25P-Φ2*50L	2	M10*1.25P	50	50	21.4	6	7	17
JTASM-10-50-1	M10*1.25P-Φ1*50L	1	M10*1.25P	50	50	21.4	6	7	17

Mounted High Pressure Adjustable Nozzle

The injection direction is paralleled to the fixed direction, with the fixed method adopting the close fit for the mount. It is widely applied to the spraying and cooling system and ejector of each type of machine.



SPECIFICATIONS
For Mounted High Pressure Adjustable Nozzle

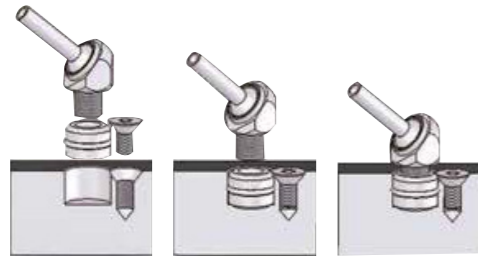
• Pressure Resistance: 30 kg/cm²

- Easy adjustable angle.
- Accurate and steady positioning, with no spring-back.
- Get the "water" power ready for an accurate injection towards milling cutter or drill, thus securing the sufficient cooling for cutter or drill during the machining process and extending its service life.



Item No.	Specifications	Major Size Unit (mm)					
		D	L	D1	L1	B1	Ø(B)
JTDP-10-0-2	Φ10*Φ2	2	1	3	8	4.5	10
JTDP-12-5-2	Φ12*Φ2*5L	2	5	4	8	5.5	12
JTDP-14-8-3	Φ14*Φ3*8L	3	8	5	8	7	14
JTDP-15-50-1	Φ15*Φ1*50L	1	50	6	8	7	15
JTDP-15-50-2	Φ15*Φ2*50L	2	50	6	8	7	15
JTDP-15-50-4	Φ15*Φ4*50L	4	50	6	8	7	15
JTDP-15-30-1	Φ15*Φ1*30L	1	30	6	8	7	15
JTDP-15-30-2	Φ15*Φ2*30L	2	30	6	8	7	15
JTDP-15-30-4	Φ15*Φ4*30L	4	30	6	8	7	15
JTDP-15-10-1	Φ15*Φ1*10L	1	10	6	8	7	15
JTDP-15-10-2	Φ15*Φ2*10L	2	10	6	8	7	15
JTDP-15-10-4	Φ15*Φ4*10L	4	10	6	8	7	15
JTDP-15-5-1	Φ15*Φ1*5L	1	5	6	8	7	15
JTDP-15-5-2	Φ15*Φ2*5L	2	5	6	8	7	15
JTDP-15-5-4	Φ15*Φ4*5L	4	5	6	8	7	15
JTDP-16-50-1	Φ16*Φ1*50L	1	50	6	11	7	16
JTDP-16-50-2	Φ16*Φ2*50L	2	50	6	11	7	16
JTDP-16-50-4	Φ16*Φ4*50L	4	50	6	11	7	16
JTDP-16-30-1	Φ16*Φ1*30L	1	30	6	11	7	16
JTDP-16-30-2	Φ16*Φ2*30L	2	30	6	11	7	16
JTDP-16-30-4	Φ16*Φ4*30L	4	30	6	11	7	16
JTDP-16-10-1	Φ16*Φ1*10L	1	10	6	11	7	16
JTDP-16-10-2	Φ16*Φ2*10L	2	10	6	11	7	16
JTDP-16-10-4	Φ16*Φ4*10L	4	10	6	11	7	16
JTDP-16-5-1	Φ16*Φ1*5L	1	5	6	11	7	16
JTDP-16-5-2	Φ16*Φ2*5L	2	5	6	11	7	16
JTDP-16-5-4	Φ16*Φ4*5L	4	5	6	11	7	16

Easy Jet-On High Pressure Adjustable Nozzle




The injection direction forms one angle with the fixed direction, but the fixed direction uses the close fit for a mount and is applied to each CNC system.

- Easy adjustable angle.
- Accurate and steady positioning, with no spring-back.
- Get the "water" power ready for an accurate injection towards milling cutter or drill, thus securing the sufficient cooling for cutter or drill during the machining process and extending its service life
- Applied widely to the spraying and cooling system and ejector of each type of machine.


High Pressure Adjustable Nozzle Easily Control the Spraying Direction

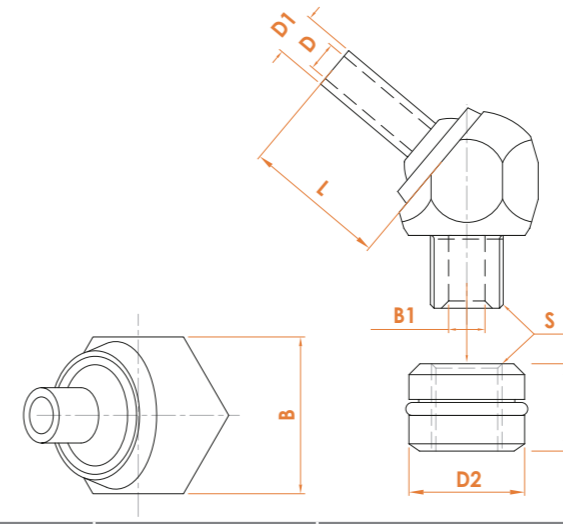


 Easily regulate the spraying angel and direction depending on operation need that helps save your time.

Brass Ball Nozzle Inconvenient to Adjust the Spraying Direction



 Regulating the required angles leads to inconvenience that it is time-consuming during each operation.



SPECIFICATIONS
For Easy Jet-On High Pressure Adjustable Nozzle

• Pressure Resistance: 30 kgf/cm²

Item No.	Specifications	Major Size Unit (mm)							
		D2	D	Thread(S)	L	D1	B1	H	Hexagram(B)
JTAT-10-M6-10-3	M6*1.0P-Φ3*10L	10	3	M6*1.0P	10	5	3	8.5	14
JTAT-10-M6-20-3	M6*1.0P-Φ3*20L	10	3	M6*1.0P	20	5	3	8.5	14
JTAT-12-M6-10-3	M6*1.0P-Φ3*10L	12	3	M6*1.0P	10	5	3	10.5	14
JTAT-12-M6-20-3	M6*1.0P-Φ3*20L	12	3	M6*1.0P	20	5	3	10.5	14
JTAT-14-1/8-10-4	1/8"PT-Φ4*10L	14	4	PT 1/8"	10	6	6	10.5	17
JTAT-14-1/8-10-2	1/8"PT-Φ2*10L	14	2	PT 1/8"	10	6	6	10.5	17
JTAT-14-1/8-10-1	1/8"PT-Φ1*10L	14	1	PT 1/8"	10	6	6	10.5	17
JTAT-14-1/8-30-4	1/8"PT-Φ4*30L	14	4	PT 1/8"	30	6	6	10.5	17
JTAT-14-1/8-30-2	1/8"PT-Φ2*30L	14	2	PT 1/8"	30	6	6	10.5	17
JTAT-14-1/8-30-1	1/8"PT-Φ1*30L	14	1	PT 1/8"	30	6	6	10.5	17
JTAT-14-1/8-50-4	1/8"PT-Φ4*50L	14	4	PT 1/8"	50	6	6	10.5	17
JTAT-14-1/8-50-2	1/8"PT-Φ2*50L	14	2	PT 1/8"	50	6	6	10.5	17
JTAT-14-1/8-50-1	1/8"PT-Φ1*50L	14	1	PT 1/8"	50	6	6	10.5	17
JTAT-15-1/8-10-4	1/8"PT-Φ4*10L	15	4	PT 1/8"	10	6	6	10.5	17
JTAT-15-1/8-10-2	1/8"PT-Φ2*10L	15	2	PT 1/8"	10	6	6	10.5	17
JTAT-15-1/8-10-1	1/8"PT-Φ1*10L	15	1	PT 1/8"	10	6	6	10.5	17
JTAT-15-1/8-30-4	1/8"PT-Φ4*30L	15	4	PT 1/8"	30	6	6	10.5	17
JTAT-15-1/8-30-2	1/8"PT-Φ2*30L	15	2	PT 1/8"	30	6	6	10.5	17
JTAT-15-1/8-30-1	1/8"PT-Φ1*30L	15	1	PT 1/8"	30	6	6	10.5	17
JTAT-15-1/8-50-4	1/8"PT-Φ4*50L	15	4	PT 1/8"	50	6	6	10.5	17
JTAT-15-1/8-50-2	1/8"PT-Φ2*50L	15	2	PT 1/8"	50	6	6	10.5	17
JTAT-15-1/8-50-1	1/8"PT-Φ1*50L	15	1	PT 1/8"	50	6	6	10.5	17
JTAT-16-1/8-10-4	1/8"PT-Φ4*10L	16	4	PT 1/8"	10	6	6	12	17
JTAT-16-1/8-10-2	1/8"PT-Φ2*10L	16	2	PT 1/8"	10	6	6	12	17
JTAT-16-1/8-10-1	1/8"PT-Φ1*10L	16	1	PT 1/8"	10	6	6	12	17
JTAT-16-1/8-30-4	1/8"PT-Φ4*30L	16	4	PT 1/8"	30	6	6	12	17
JTAT-16-1/8-30-2	1/8"PT-Φ2*30L	16	2	PT 1/8"	30	6	6	12	17
JTAT-16-1/8-30-1	1/8"PT-Φ1*30L	16	1	PT 1/8"	30	6	6	12	17
JTAT-16-1/8-50-4	1/8"PT-Φ4*50L	16	4	PT 1/8"	50	6	6	12	17
JTAT-16-1/8-50-2	1/8"PT-Φ2*50L	16	2	PT 1/8"	50	6	6	12	17
JTAT-16-1/8-50-1	1/8"PT-Φ1*50L	16	1	PT 1/8"	50	6	6	12	17
JTAT-18-1/8-10-4	1/8"PT-Φ4*10L	18	4	PT 1/8"	10	6	6	12	17
JTAT-18-1/8-10-2	1/8"PT-Φ2*10L	18	2	PT 1/8"	10	6	6	12	17
JTAT-18-1/8-10-1	1/8"PT-Φ1*10L	18	1	PT 1/8"	10	6	6	12	17
JTAT-18-1/8-30-4	1/8"PT-Φ4*30L	18	4	PT 1/8"	30	6	6	12	17
JTAT-18-1/8-30-2	1/8"PT-Φ2*30L	18	2	PT 1/8"	30	6	6	12	17
JTAT-18-1/8-30-1	1/8"PT-Φ1*30L	18	1	PT 1/8"	30	6	6	12	17
JTAT-18-1/8-50-4	1/8"PT-Φ4*50L	18	4	PT 1/8"	50	6	6	12	17
JTAT-18-1/8-50-2	1/8"PT-Φ2*50L	18	2	PT 1/8"	50	6	6	12	17
JTAT-18-1/8-50-1	1/8"PT-Φ1*50L	18	1	PT 1/8"	50	6	6	12	17

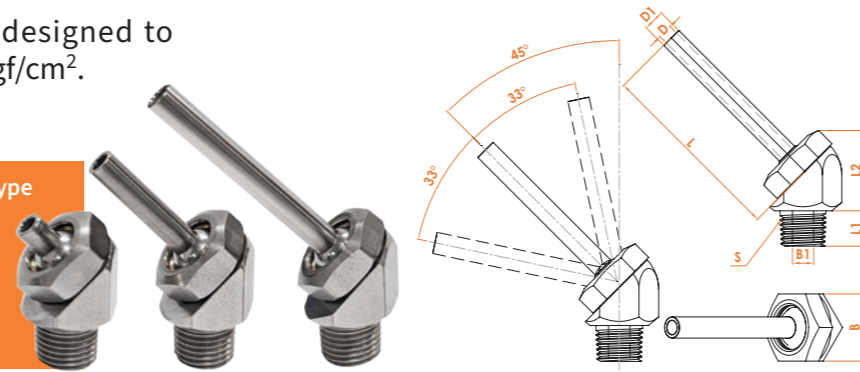
Inclined-Injection Ultra High Pressure Adjustable Nozzle

The Ultra High Pressure nozzle is designed to operate at pressures as high as 100 kgf/cm².

SPECIFICATIONS - Inclined-Injection Type

For Inclined-Injection Ultra High Pressure Adjustable Nozzle

- Made of Stainless Steel
- Pressure Resistance: 100kg/cm²



Item No.	Specifications	Major Size Unit (mm)								
		D	Thread(S)	L	L1	L2	D1	B1	Hexagram(B)	
JTAP-1/8-10-4-H19	1/8"PT-Φ4*10L	4	PT 1/8"	10	10	23	6	6	19	
JTAP-1/8-10-2-H19	1/8"PT-Φ2*10L	2	PT 1/8"	10	10	23	6	6	19	
JTAP-1/8-10-1-H19	1/8"PT-Φ1*10L	1	PT 1/8"	10	10	23	6	6	19	
JTAP-1/8-30-4-H19	1/8"PT-Φ4*30L	4	PT 1/8"	30	10	23	6	6	19	
JTAP-1/8-30-2-H19	1/8"PT-Φ2*30L	2	PT 1/8"	30	10	23	6	6	19	
JTAP-1/8-30-1-H19	1/8"PT-Φ1*30L	1	PT 1/8"	30	10	23	6	6	19	
JTAP-1/8-50-4-H19	1/8"PT-Φ4*50L	4	PT 1/8"	50	10	23	6	6	19	
JTAP-1/8-50-2-H19	1/8"PT-Φ2*50L	2	PT 1/8"	50	10	23	6	6	19	
JTAP-1/8-50-1-H19	1/8"PT-Φ1*50L	1	PT 1/8"	50	10	23	6	6	19	
JTAP-1/4-10-4-H19	1/4"PT-Φ4*10L	4	PT 1/4"	10	10	23	6	6	19	
JTAP-1/4-10-2-H19	1/4"PT-Φ2*10L	2	PT 1/4"	10	10	23	6	6	19	
JTAP-1/4-10-1-H19	1/4"PT-Φ1*10L	1	PT 1/4"	10	10	23	6	6	19	
JTAP-1/4-30-4-H19	1/4"PT-Φ4*30L	4	PT 1/4"	30	10	23	6	6	19	
JTAP-1/4-30-2-H19	1/4"PT-Φ2*30L	2	PT 1/4"	30	10	23	6	6	19	
JTAP-1/4-30-1-H19	1/4"PT-Φ1*30L	1	PT 1/4"	30	10	23	6	6	19	
JTAP-1/4-50-4-H19	1/4"PT-Φ4*50L	4	PT 1/4"	50	10	23	6	6	19	
JTAP-1/4-50-2-H19	1/4"PT-Φ2*50L	2	PT 1/4"	50	10	23	6	6	19	
JTAP-1/4-50-1-H19	1/4"PT-Φ1*50L	1	PT 1/4"	50	10	23	6	6	19	
JTAN-1/8-10-4-H19	1/8"NPT-Φ4*10L	4	NPT 1/8"	10	10	23	6	6	19	
JTAN-1/8-10-2-H19	1/8"NPT-Φ2*10L	2	NPT 1/8"	10	10	23	6	6	19	
JTAN-1/8-10-1-H19	1/8"NPT-Φ1*10L	1	NPT 1/8"	10	10	23	6	6	19	
JTAN-1/8-30-4-H19	1/8"NPT-Φ4*30L	4	NPT 1/8"	30	10	23	6	6	19	
JTAN-1/8-30-2-H19	1/8"NPT-Φ2*30L	2	NPT 1/8"	30	10	23	6	6	19	
JTAN-1/8-30-1-H19	1/8"NPT-Φ1*30L	1	NPT 1/8"	30	10	23	6	6	19	
JTAN-1/8-50-4-H19	1/8"NPT-Φ4*50L	4	NPT 1/8"	50	10	23	6	6	19	
JTAN-1/8-50-2-H19	1/8"NPT-Φ2*50L	2	NPT 1/8"	50	10	23	6	6	19	
JTAN-1/8-50-1-H19	1/8"NPT-Φ1*50L	1	NPT 1/8"	50	10	23	6	6	19	
JTAN-1/4-10-4-H19	1/4"NPT-Φ4*10L	4	NPT 1/4"	10	10	23	6	6	19	
JTAN-1/4-10-2-H19	1/4"NPT-Φ2*10L	2	NPT 1/4"	10	10	23	6	6	19	
JTAN-1/4-10-1-H19	1/4"NPT-Φ1*10L	1	NPT 1/4"	10	10	23	6	6	19	
JTAN-1/4-30-4-H19	1/4"NPT-Φ4*30L	4	NPT 1/4"	30	10	23	6	6	19	
JTAN-1/4-30-2-H19	1/4"NPT-Φ2*30L	2	NPT 1/4"	30	10	23	6	6	19	
JTAN-1/4-30-1-H19	1/4"NPT-Φ1*30L	1	NPT 1/4"	30	10	23	6	6	19	
JTAN-1/4-50-4-H19	1/4"NPT-Φ4*50L	4	NPT 1/4"	50	10	23	6	6	19	
JTAN-1/4-50-2-H19	1/4"NPT-Φ2*50L	2	NPT 1/4"	50	10	23	6	6	19	
JTAN-1/4-50-1-H19	1/4"NPT-Φ1*50L	1	NPT 1/4"	50	10	23	6	6	19	
JTAM-10-10-4-H19	M10*1.25P-Φ4*10L	4	M10*1.25P	10	10	23	6	6	19	
JTAM-10-10-2-H19	M10*1.25P-Φ2*10L	2	M10*1.25P	10	10	23	6	6	19	
JTAM-10-10-1-H19	M10*1.25P-Φ1*10L	1	M10*1.25P	10	10	23	6	6	19	
JTAM-10-30-4-H19	M10*1.25P-Φ4*30L	4	M10*1.25P	30	10	23	6	6	19	
JTAM-10-30-2-H19	M10*1.25P-Φ2*30L	2	M10*1.25P	30	10	23	6	6	19	
JTAM-10-30-1-H19	M10*1.25P-Φ1*30L	1	M10*1.25P	30	10	23	6	6	19	
JTAM-10-50-4-H19	M10*1.25P-Φ4*50L	4	M10*1.25P	50	10	23	6	6	19	
JTAM-10-50-2-H19	M10*1.25P-Φ2*50L	2	M10*1.25P	50	10	23	6	6	19	
JTAM-10-50-1-H19	M10*1.25P-Φ1*50L	1	M10*1.25P	50	10	23	6	6	19	

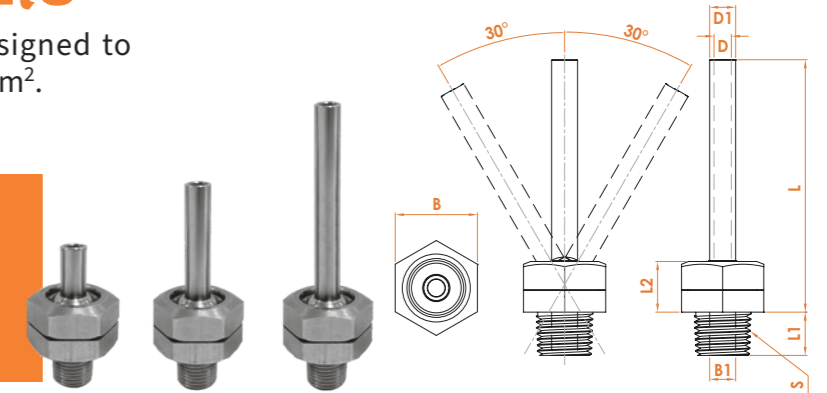
Direct-Injection Ultra High Pressure Adjustable Nozzle

The Ultra High Pressure nozzle is designed to operate at pressures as high as 100 kgf/cm².

SPECIFICATIONS - Inclined-Injection Type

For Inclined-Injection Ultra High Pressure Adjustable Nozzle

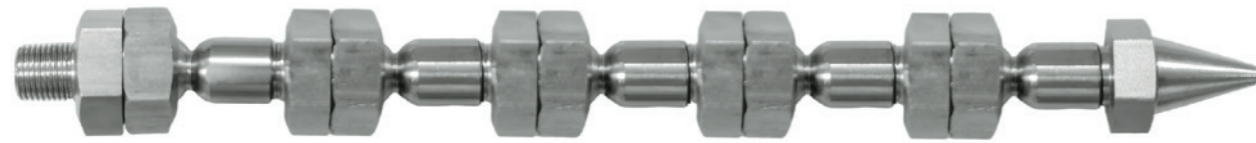
- Made of Stainless Steel
- Pressure Resistance: 100kg/cm²



Item No.	Specifications	Major Size Unit (mm)								
		D	Thread(S)	L	L1	L2	D1	B1	Hexagram(B)	
JTSP-1/8-20-4-H19	1/8"PT-Φ4*20L	4	PT 1/8"	20	10	12	6	6	19	
JTSP-1/8-20-2-H19	1/8"PT-Φ2*20L	2	PT 1/8"	20	10	12	6	6	19	
JTSP-1/8-20-1-H19	1/8"PT-Φ1*20L	1	PT 1/8"	20	10	12	6	6	19	
JTSP-1/8-40-4-H19	1/8"PT-Φ4*40L	4	PT 1/8"	40	10	12	6	6	19	
JTSP-1/8-40-2-H19	1/8"PT-Φ2*40L	2	PT 1/8"	40	10	12	6	6	19	
JTSP-1/8-40-1-H19	1/8"PT-Φ1*40L	1	PT 1/8"	40	10	12	6	6	19	
JTSP-1/8-60-4-H19	1/8"PT-Φ4*60L	4	PT 1/8"	60	10	12	6	6	19	
JTSP-1/8-60-2-H19	1/8"PT-Φ2*60L	2	PT 1/8"	60	10	12	6	6	19	
JTSP-1/8-60-1-H19	1/8"PT-Φ1*60L	1	PT 1/8"	60	10	12	6	6	19	
JTSP-1/4-20-4-H19	1/4"PT-Φ4*20L	4	PT 1/4"	20	10	12	6	6	19	
JTSP-1/4-20-2-H19	1/4"PT-Φ2*20L	2	PT 1/4"	20	10	12	6	6	19	
JTSP-1/4-20-1-H19	1/4"PT-Φ1*20L	1	PT 1/4"	20	10	12	6	6	19	
JTSP-1/4-40-4-H19	1/4"PT-Φ4*40L	4	PT 1/4"	40	10	12	6	6	19	
JTSP-1/4-40-2-H19	1/4"PT-Φ2*40L	2	PT 1/4"	40	10	12	6	6	19	
JTSP-1/4-40-1-H19	1/4"PT-Φ1*40L	1	PT 1/4"	40	10	12	6	6	19	
JTSP-1/4-60-4-H19	1/4"PT-Φ4*60L	4	PT 1/4"	60	10	12	6	6	19	
JTSP-1/4-60-2-H19	1/4"PT-Φ2*60L	2	PT 1/4"	60	10	12	6	6	19	
JTSP-1/4-60-1-H19	1/4"PT-Φ1*60L	1	PT 1/4"	60	10	12	6	6	19	
JTSN-1/8-20-4-H19	1/8"NPT-Φ4*20L	4	NPT 1/8"	20	10	12	6	6	19	
JTSN-1/8-20-2-H19	1/8"NPT-Φ2*20L	2	NPT 1/8"	20	10	12	6	6	19	
JTSN-1/8-20-1-H19	1/8"NPT-Φ1*20L	1	NPT 1/8"	20	10	12	6	6	19	
JTSN-1/8-40-4-H19	1/8"NPT-Φ4*40L	4	NPT 1/8"	40	10	12	6	6	19	
JTSN-1/8-40-2-H19	1/8"NPT-Φ2*40L	2	NPT 1/8"	40	10	12	6	6	19	
JTSN-1/8-40-1-H19	1/8"NPT-Φ1*40L	1	NPT 1/8"	40	10	12	6	6	19	
JTSN-1/8-60-4-H19	1/8"NPT-Φ4*60L	4	NPT 1/8"	60	10	12	6	6	19	
JTSN-1/8-60-2-H19	1/8"NPT-Φ2*60L	2	NPT 1/8"	60	10	12	6	6	19	
JTSN-1/8-60-1-H19	1/8"NPT-Φ1*60L	1	NPT 1/8"	60	10	12	6	6	19	
JTSN-1/4-20-4-H19	1/4"NPT-Φ4*20L	4	NPT 1/4"	20	10	12	6	6	19	
JTSN-1/4-20-2-H19	1/4"NPT-Φ2*20L	2	NPT 1/4"	20	10	12	6	6	19	
JTSN-1/4-20-1-H19	1/4"NPT-Φ1*20L	1	NPT 1/4"	20	10	12	6	6	19	
JTSN-1/4-40-4-H19	1/4"NPT-Φ4*40L	4	NPT 1/4"	40	10	12	6	6	19	
JTSN-1/4-40-2-H19	1/4"NPT-Φ2*40L	2	NPT 1/4"	40	10	12	6	6	19	
JTSN-1/4-40-1-H19	1/4"NPT-Φ1*40L	1	NPT 1/4"	40	10	12	6	6	19	
JTSN-1/4-60-4-H19	1/4"NPT-Φ4*60L	4	NPT 1/4"	60	10	12	6	6	19	
JTSN-1/4-60-2-H19	1/4"NPT-Φ2*60L	2	NPT 1/4"	60	10	12	6	6	19	
JTSN-1/4-60-1-H19	1/4"NPT-Φ1*60L	1	NPT 1/4"	60	10	12	6	6	19	
JTSM-10-20-4-H19	M10*1.25P*Φ4*20L	4	M10*1.25P	20	10	12	6	6	19	
JTSM-10-20-2-H19	M10*1.25P*Φ2*20L	2	M10*1.25P	20	10	12	6	6	19	
JTSM-10-20-1-H19	M10*1.25P*Φ1*20L	1	M10*1.25P	20	10	12	6	6	19	
JTSM-10-40-4-H19	M10*1.25P*Φ4*40L	4	M10*1.25P	40	10	12	6	6	19	
JTSM-10-40-2-H19	M10*1.25P*Φ2*40L	2	M10*1.25P	40	10	12	6	6	19	
JTSM-10-40-1-H19	M10*1.25P*Φ1*40L	1	M10*1.25P	40	10	12	6	6	19	
JTSM-10-60-4-H19	M10*1.25P*Φ4*60L	4	M10*1.25P	60	10	12	6	6	19	
JTSM-10-60-2-H19	M10*1.25P*Φ2*60L	2	M10*1.25P	60	10	12	6	6	19	
JTSM-10-60-1-H19	M10*1.25P*Φ1*60L	1	M10*1.25P	60	10	12	6	6	19	

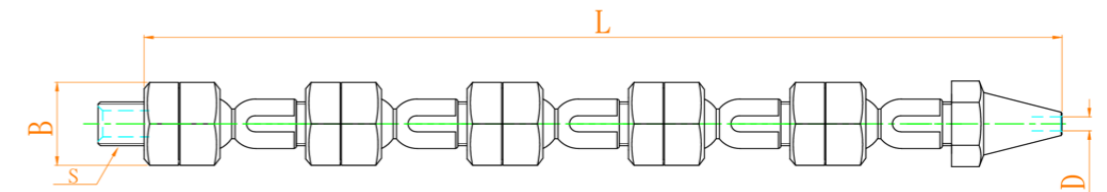
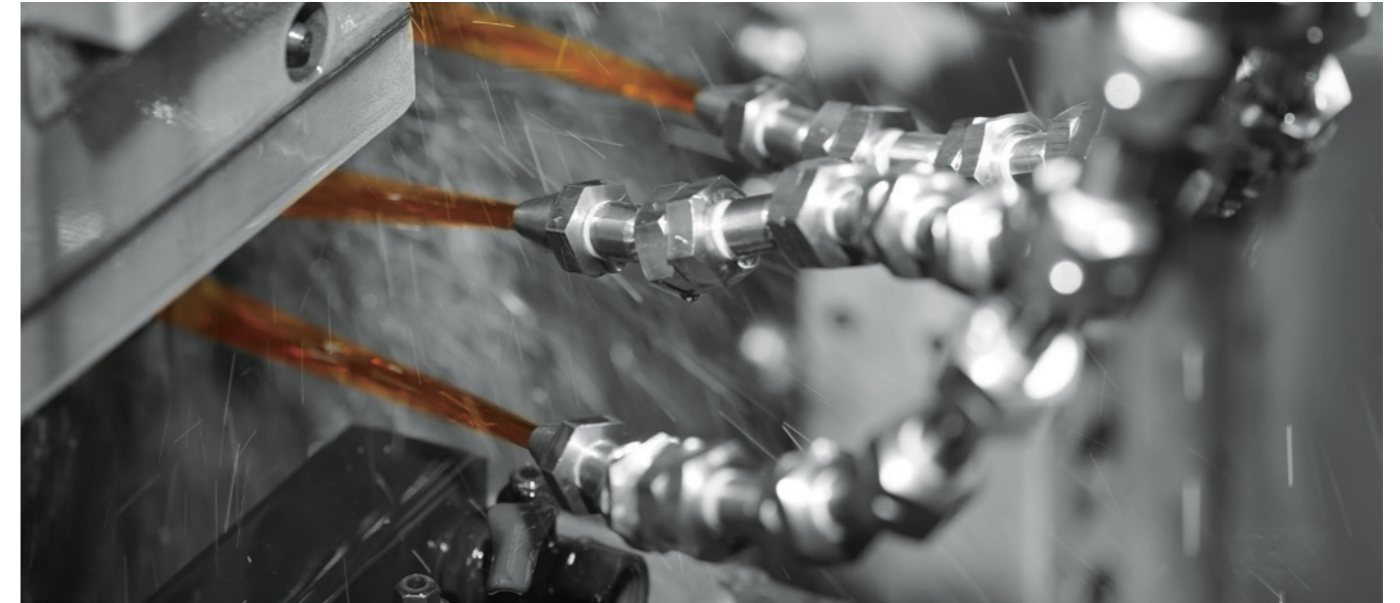
Stainless Steel Adjustable Coolant Pipe System

- Made from stainless steel.
- The length can be increased or decreased as will.
- The compression resistance can be as high as 70 kgf/cm².
- Can be individually adjusted the angel.

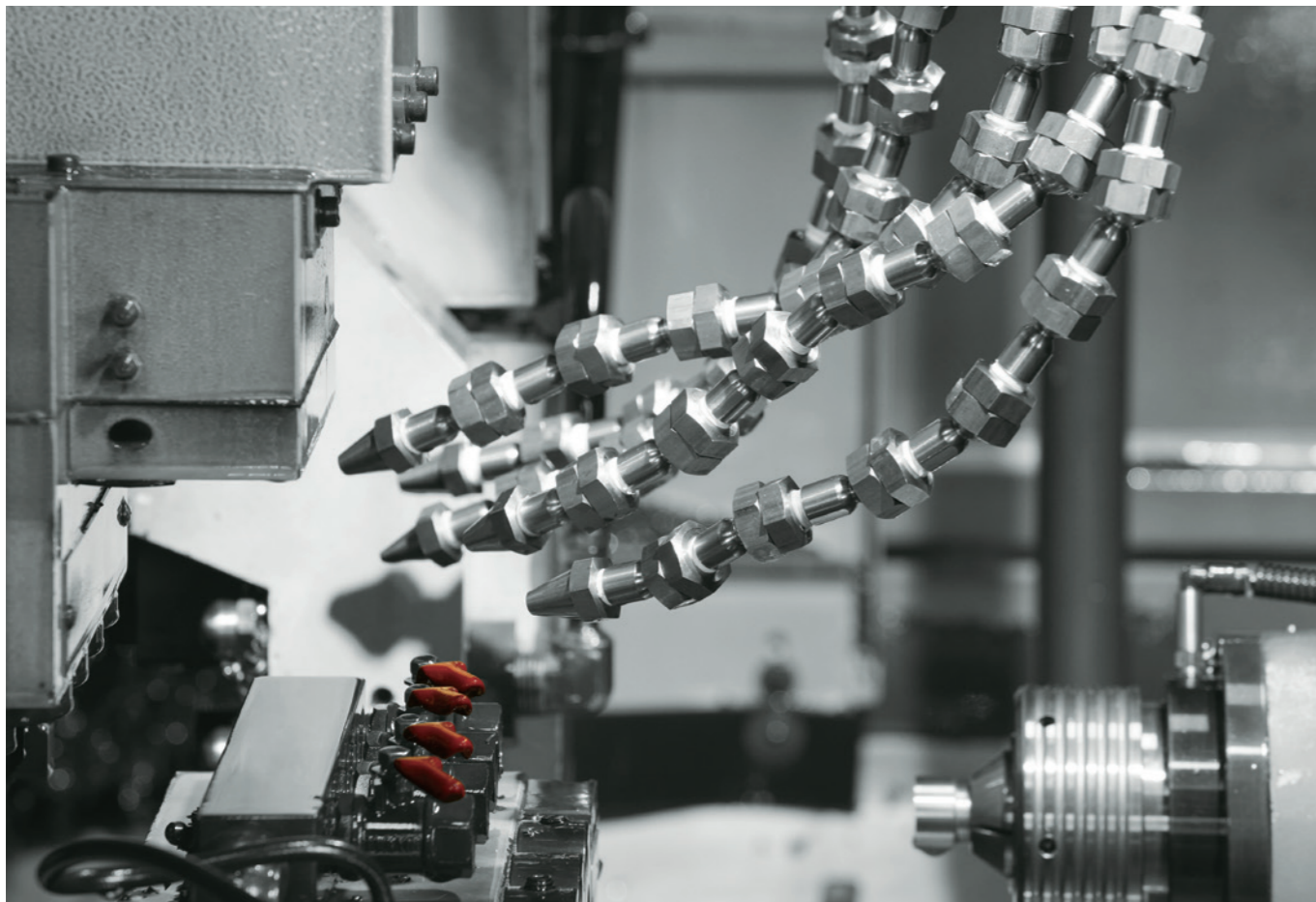
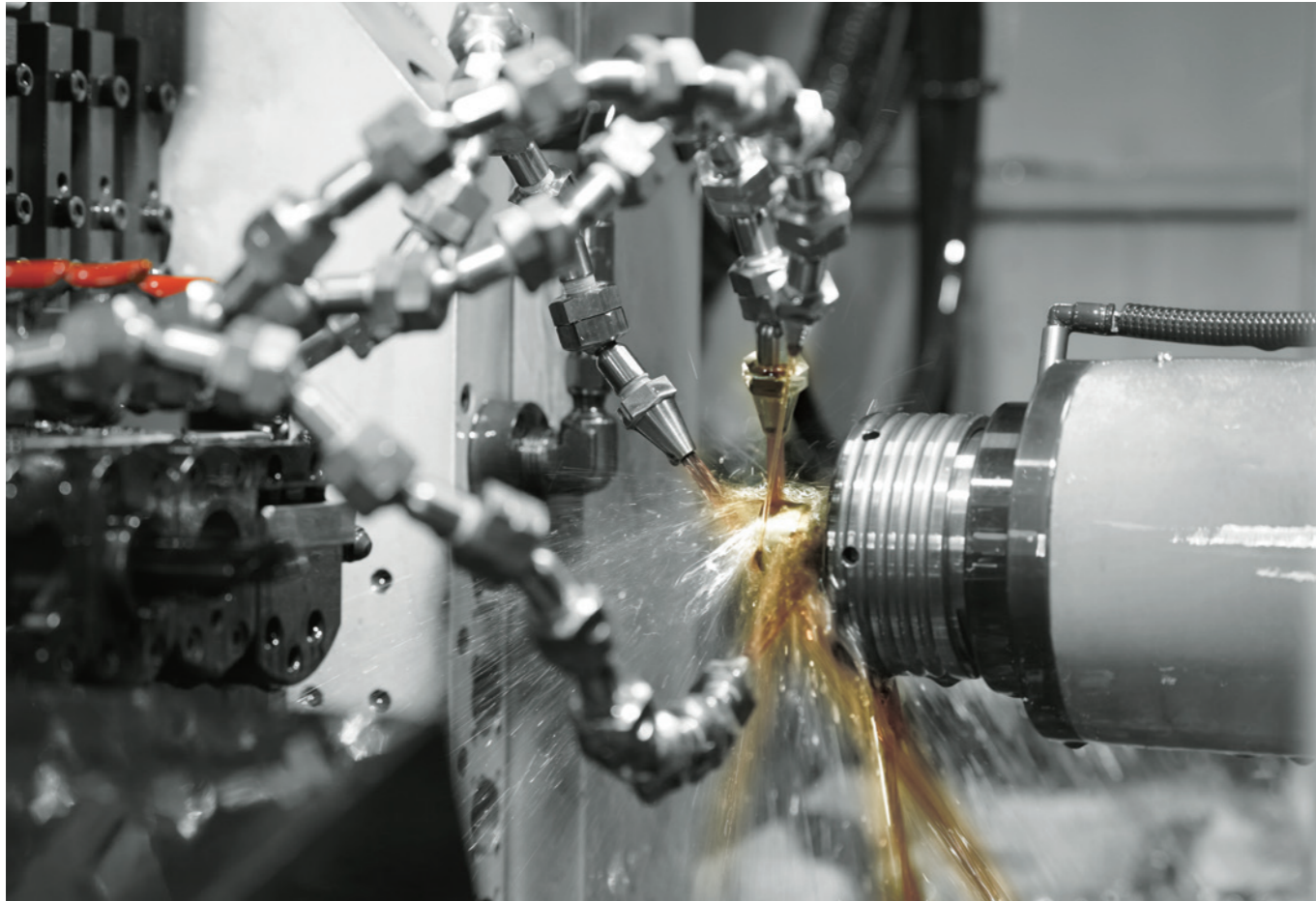


Before use, please ensure that all nuts at the joint sections are securely tightened.

Item No.	Specifications	Major Size Unit (mm)			
		D	Thread(S)	L	Hexagram(B)
JT12001	1/8"PT-Ø1.6*200L	Ø1.6	PT 1/8"	200	17
JT12002	1/8"PT-Ø3.2*200L	Ø3.2	PT 1/8"	200	17
JT12003	1/8"PT-Ø5.0*200L	Ø5.0	PT 1/8"	200	17
JT13001	1/8"PT-Ø1.6*300L	Ø1.6	PT 1/8"	300	17
JT13002	1/8"PT-Ø3.2*300L	Ø3.2	PT 1/8"	300	17
JT13003	1/8"PT-Ø5.0*300L	Ø5.0	PT 1/8"	300	17
JT14001	1/8"PT-Ø1.6*400L	Ø1.6	PT 1/8"	400	17
JT14002	1/8"PT-Ø3.2*400L	Ø3.2	PT 1/8"	400	17
JT14003	1/8"PT-Ø5.0*400L	Ø5.0	PT 1/8"	400	17
JT15001	1/8"PT-Ø1.6*500L	Ø1.6	PT 1/8"	500	17
JT15002	1/8"PT-Ø3.2*500L	Ø3.2	PT 1/8"	500	17
JT15003	1/8"PT-Ø5.0*500L	Ø5.0	PT 1/8"	500	17
JT22001	1/4"PT-Ø1.6*200L	Ø1.6	PT 1/4"	200	17
JT22002	1/4"PT-Ø3.2*200L	Ø3.2	PT 1/4"	200	17
JT22003	1/4"PT-Ø5.0*200L	Ø5.0	PT 1/4"	200	17
JT23001	1/4"PT-Ø1.6*300L	Ø1.6	PT 1/4"	300	17
JT23002	1/4"PT-Ø3.2*300L	Ø3.2	PT 1/4"	300	17
JT23003	1/4"PT-Ø5.0*300L	Ø5.0	PT 1/4"	300	17
JT24001	1/4"PT-Ø1.6*400L	Ø1.6	PT 1/4"	400	17
JT24002	1/4"PT-Ø3.2*400L	Ø3.2	PT 1/4"	400	17
JT24003	1/4"PT-Ø5.0*400L	Ø5.0	PT 1/4"	400	17
JT25001	1/4"PT-Ø1.6*500L	Ø1.6	PT 1/4"	500	17
JT25002	1/4"PT-Ø3.2*500L	Ø3.2	PT 1/4"	500	17
JT25003	1/4"PT-Ø5.0*500L	Ø5.0	PT 1/4"	500	17



Item No.	Specifications	Major Size Unit (mm)			
		D	Thread(S)	L	Hexagram(B)
JT12001N	1/8"NPT-Ø1.6*200L	Ø1.6	NPT 1/8"	200	17
JT12002N	1/8"NPT-Ø3.2*200L	Ø3.2	NPT 1/8"	200	17
JT12003N	1/8"NPT-Ø5.0*200L	Ø5.0	NPT 1/8"	200	17
JT13001N	1/8"NPT-Ø1.6*300L	Ø1.6	NPT 1/8"	300	17
JT13002N	1/8"NPT-Ø3.2*300L	Ø3.2	NPT 1/8"	300	17
JT13003N	1/8"NPT-Ø5.0*300L	Ø5.0	NPT 1/8"	300	17
JT14001N	1/8"NPT-Ø1.6*400L	Ø1.6	NPT 1/8"	400	17
JT14002N	1/8"NPT-Ø3.2*400L	Ø3.2	NPT 1/8"	400	17
JT14003N	1/8"NPT-Ø5.0*400L	Ø5.0	NPT 1/8"	400	17
JT15001N	1/8"NPT-Ø1.6*500L	Ø1.6	NPT 1/8"	500	17
JT15002N	1/8"NPT-Ø3.2*500L	Ø3.2	NPT 1/8"	500	17
JT15003N	1/8"NPT-Ø5.0*500L	Ø5.0	NPT 1/8"	500	17
JT22001N	1/4"NPT-Ø1.6*200L	Ø1.6	NPT 1/4"	200	17
JT22002N	1/4"NPT-Ø3.2*200L	Ø3.2	NPT 1/4"	200	17
JT22003N	1/4"NPT-Ø5.0*200L	Ø5.0	NPT 1/4"	200	17
JT23001N	1/4"NPT-Ø1.6*300L	Ø1.6	NPT 1/4"	300	17
JT23002N	1/4"NPT-Ø3.2*300L	Ø3.2	NPT 1/4"	300	17
JT23003N	1/4"NPT-Ø5.0*300L	Ø5.0	NPT 1/4"	300	17
JT24001N	1/4"NPT-Ø1.6*400L	Ø1.6	NPT 1/4"	400	17
JT24002N	1/4"NPT-Ø3.2*400L	Ø3.2	NPT 1/4"	400	17
JT24003N	1/4"NPT-Ø5.0*400L	Ø5.0	NPT 1/4"	400	17
JT25001N	1/4"NPT-Ø1.6*500L	Ø1.6	NPT 1/4"	500	17
JT25002N	1/4"NPT-Ø3.2*500L	Ø3.2	NPT 1/4"	500	17
JT25003N	1/4"NPT-Ø5.0*500L	Ø5.0	NPT 1/4"	500	17



JTIT-01 Nozzle Angle Adjustable Tool

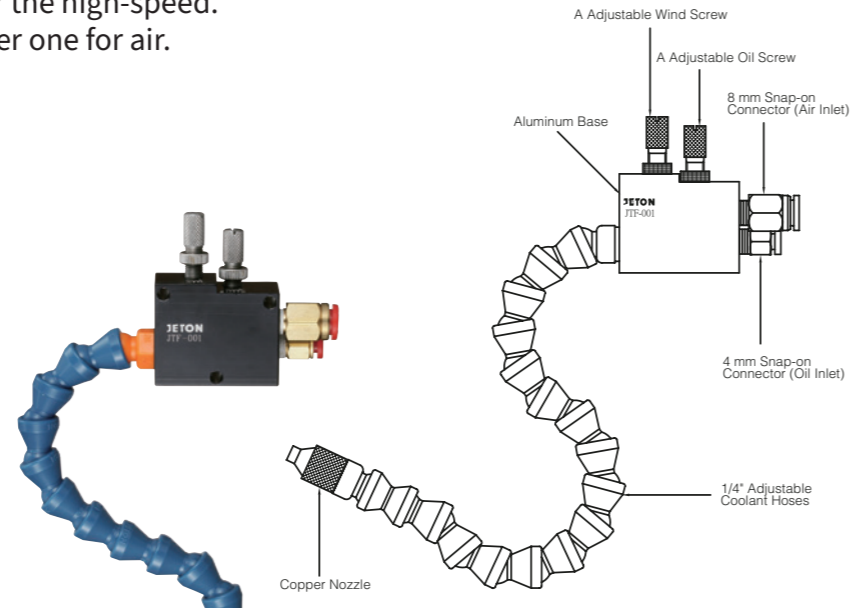
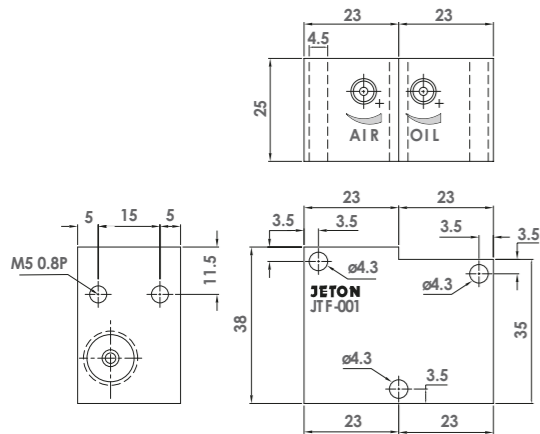
With this tool, you can easily adjust the spray angle of a high-pressure nozzle. Simply insert or fit one end of the tool into the nozzle's pipe, and you'll be able to adjust the angle effortlessly.



JTF-001 Spraying Device

- Applied to cool the micro-cutting under the high-speed.
- Two inlet ports, one for oil, and the other one for air.
- Adjust bolt to adjust the oil and air.
- The pressure exportation oil and air.

Aluminum Base	1 set
1/4" Adjustable Coolant Hoses	1 piece
A Spray Nozzle	1 piece



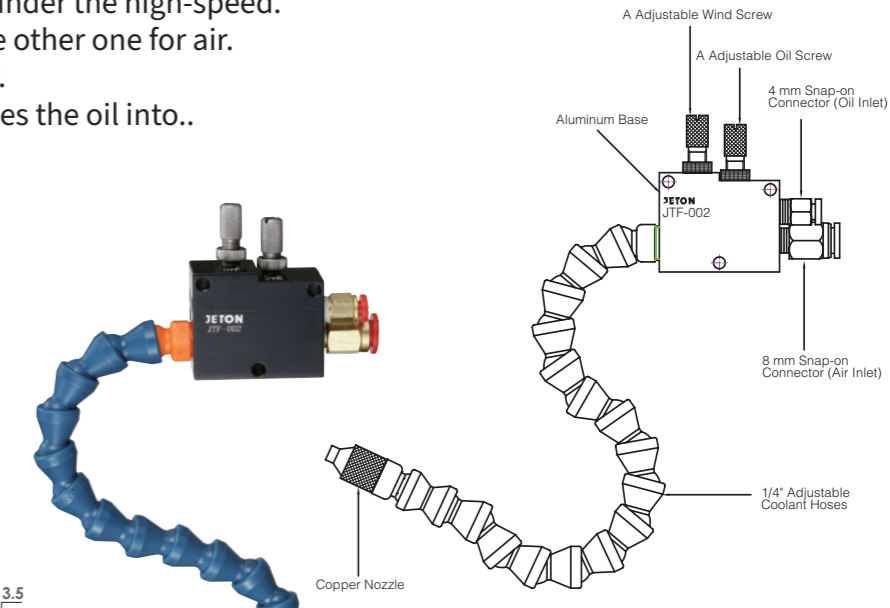
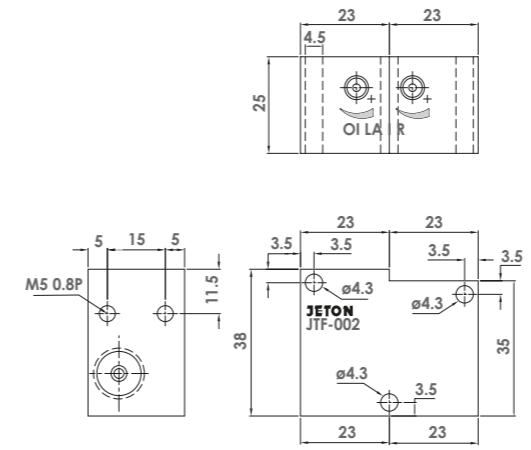
Recommended Pressures:

- Atmospheric Pressure: 0.5~5 kgf/cm²
- Hydraulic Pressure: 0.5~2 kgf/cm²

JTF-002 Spraying Device

- Applied to cool the micro-cutting under the high-speed.
- Two inlet ports, one for oil, and the other one for air.
- Adjust bolt to adjust the oil and air.
- The pressure exportation air arouses the oil into..

Aluminum Base	1 set
1/4" Adjustable Coolant Hoses	1 piece
A Spray Nozzle	1 piece

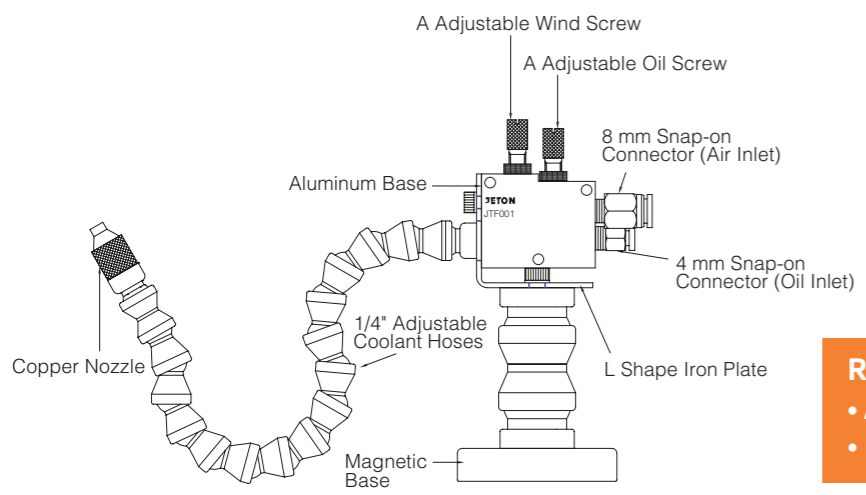


Recommended Pressures:

- Atmospheric Pressure: 3.5~5 kgf/cm²
- Hydraulic Pressure: 0 kgf/cm²

JTF-001M Spraying Device Magnetic Base Type

Aluminum Base	1 set
1/4" Adjustable Coolant Hoses	1 piece
A Spray Nozzle	1 piece
Magnetic Base	1 set

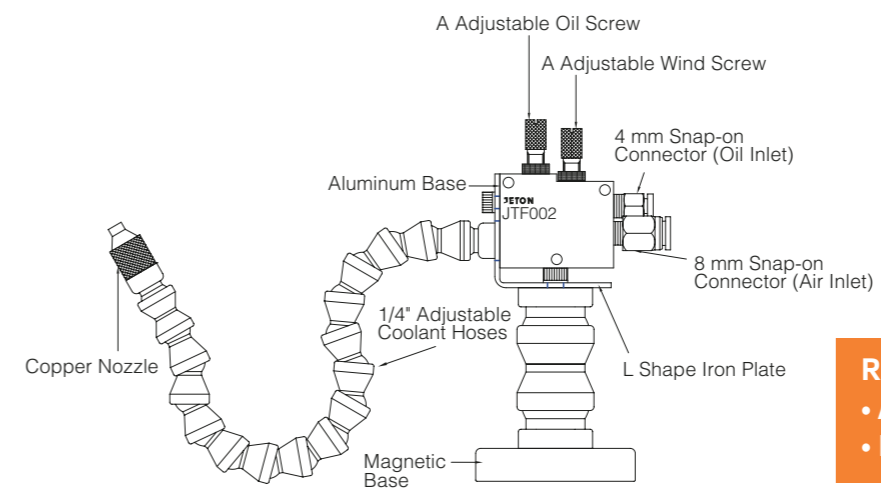


Recommended Pressures:

- Atmospheric Pressure: 0.5~5 kgf/cm²
- Hydraulic Pressure: 0.5~2 kgf/cm²

JTF-002M Spraying Device Magnetic Base Type

Aluminum Base	1 set
1/4" Adjustable Coolant Hoses	1 piece
A Spray Nozzle	1 piece
Magnetic Base	1 set



Recommended Pressures:

- Atmospheric Pressure: 3.5~5 kgf/cm²
- Hydraulic Pressure: 0 kgf/cm²

Omnipotent

ISO9001:2008 CERTIFIED
www.jeton.com.tw

